



Perfect Wireless Experience
完美无线体验

FIBOCOM L860-GL

Installation Guideline

文档版本：V1.0.0
更新日期：2018.06.12





Applicability type

No.	Product model	Description
1	L860-GL	L860-GL Installation Guideline



Copyright

Copyright ©2018Fibocom Wireless Inc. All rights reserved.

Without the prior written permission of the copyright holder, any company or individual is prohibited to excerpt, copy any part of or the entire document, or transmit the document in any form.

Attention

The document is subject to update from time to time owing to the product version upgrade or other reasons. Unless otherwise specified, the document only serves as the user guide. All the statements, information and suggestions contained in the document do not constitute any explicit or implicit guarantee.

Trademark



The trademark is registered and owned by Fibocom Wireless Inc.



Versions

Version	Update Date	Author	Description
V1.0.0	2018-06-12	KAKA Tang	Initial Creation



Contents

1 Hardware Parts.....	1
2 Hardware Connection	2
2.1 Power Supply.....	4
2.1.1 External Power Adapter.....	4
2.1.2PILLARS Charge MODE (for Limiting-Voltage testing Only)	6
3 Driver Installation	8
3.1 Driver File.....	8
3.2 Driver Install	8
3.3 Modem Port Introduction.....	9

1 Hardware Parts

There are all of parts for the L860-GL as following picture:

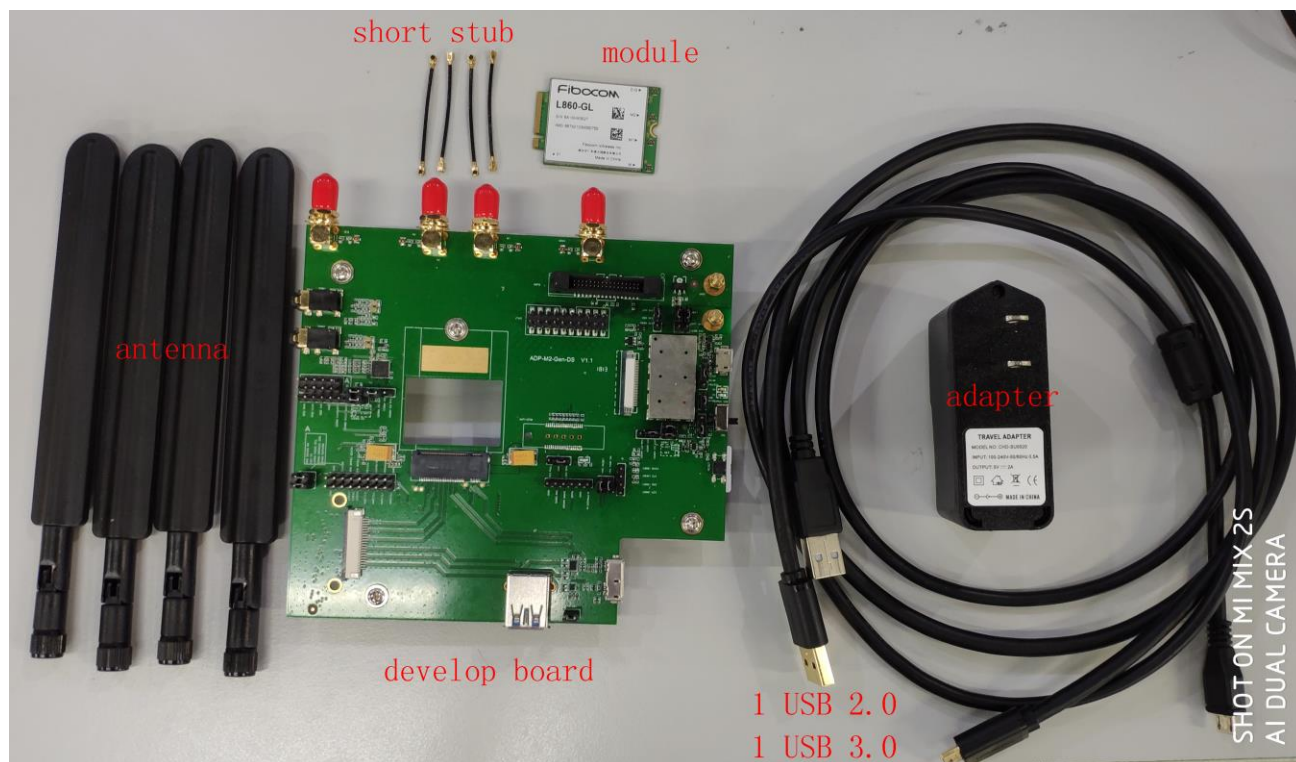
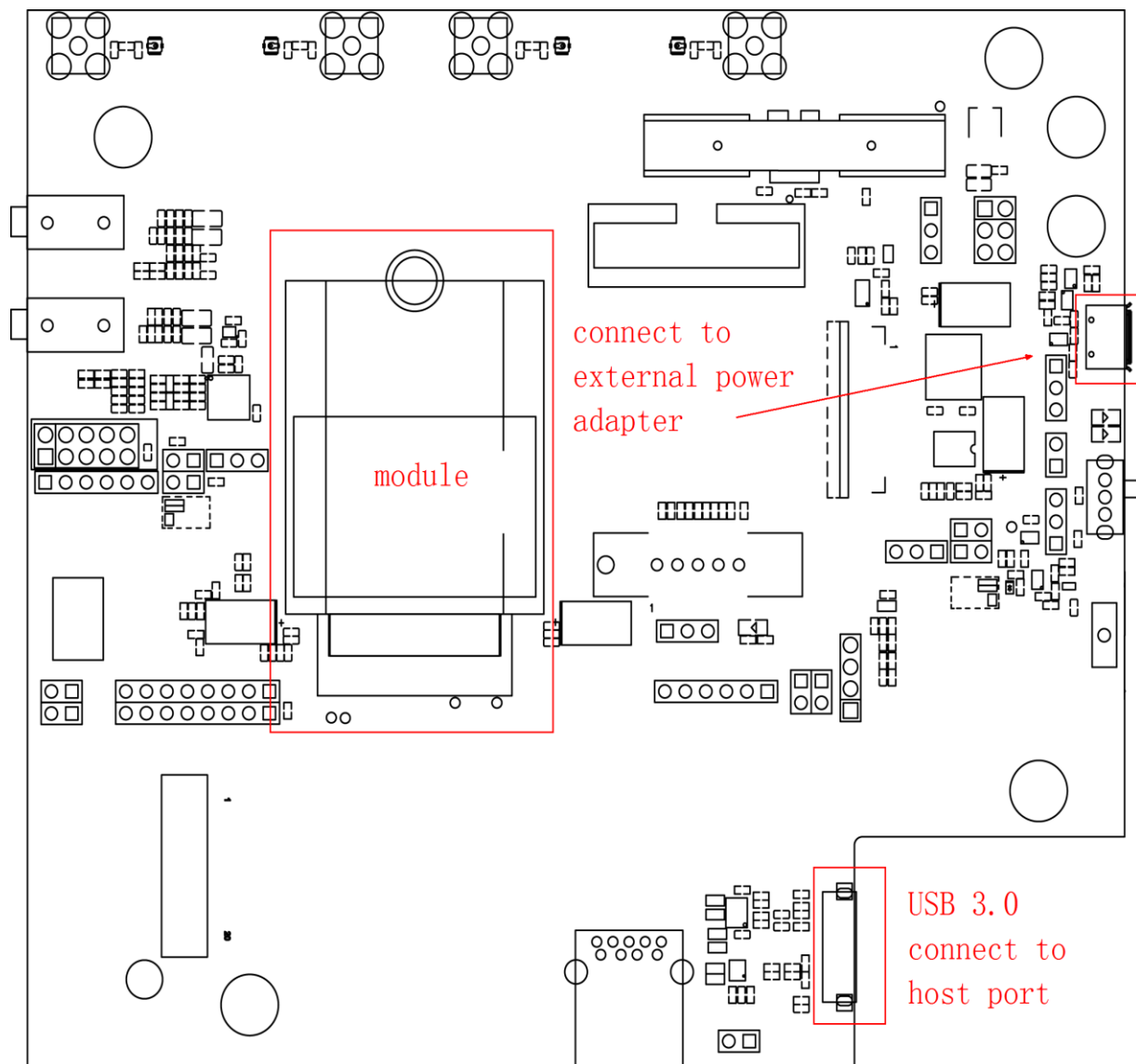


FIG 1.1

2 Hardware Connection

The following is the hardware connection diagram.



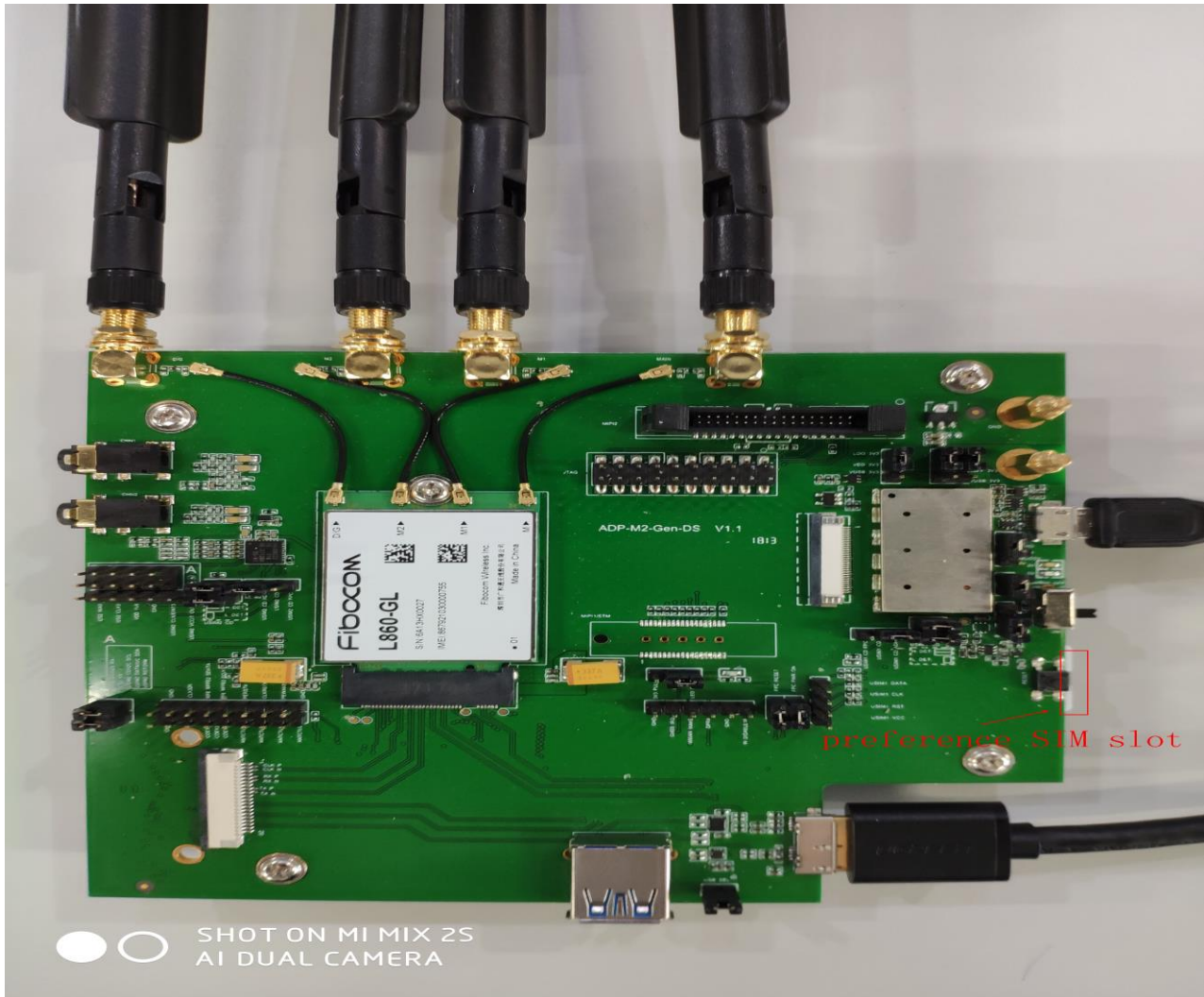


FIG 1.1



FIG 1.2

2.1 Power Supply

There are two kinds of external power supply method:

2.1.1 External Power Adapter

The connection type and jumper mode as following FIG:

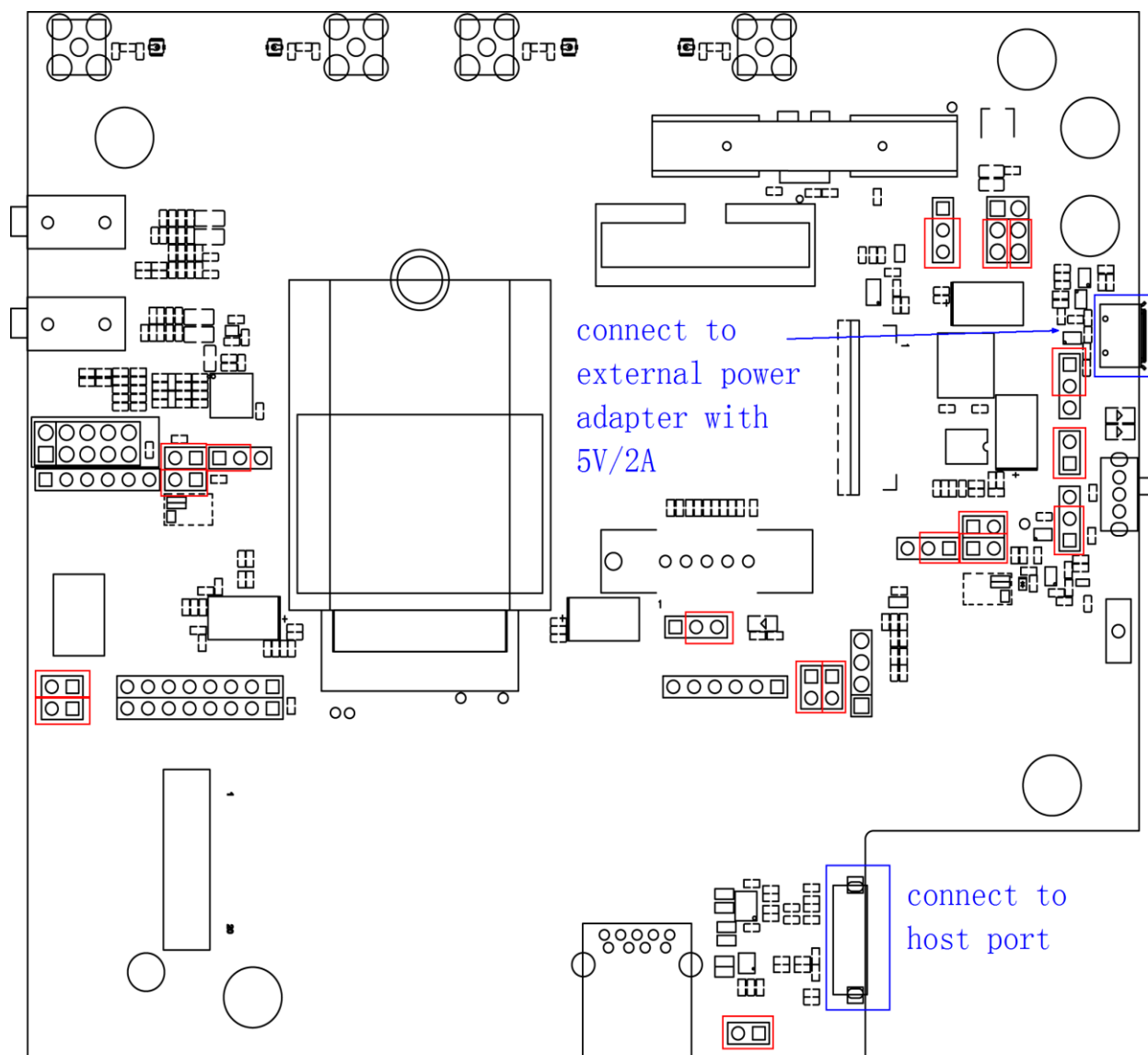


FIG 2.1

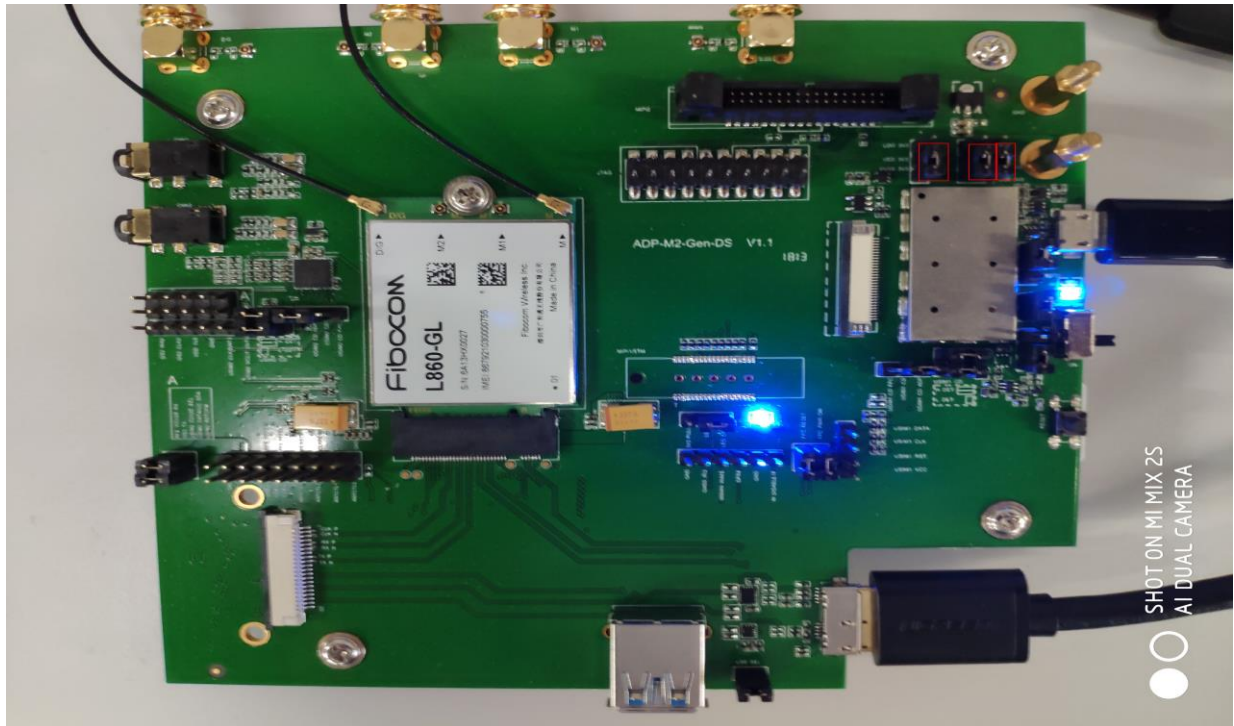


FIG2.2

And all of parts come together like that:

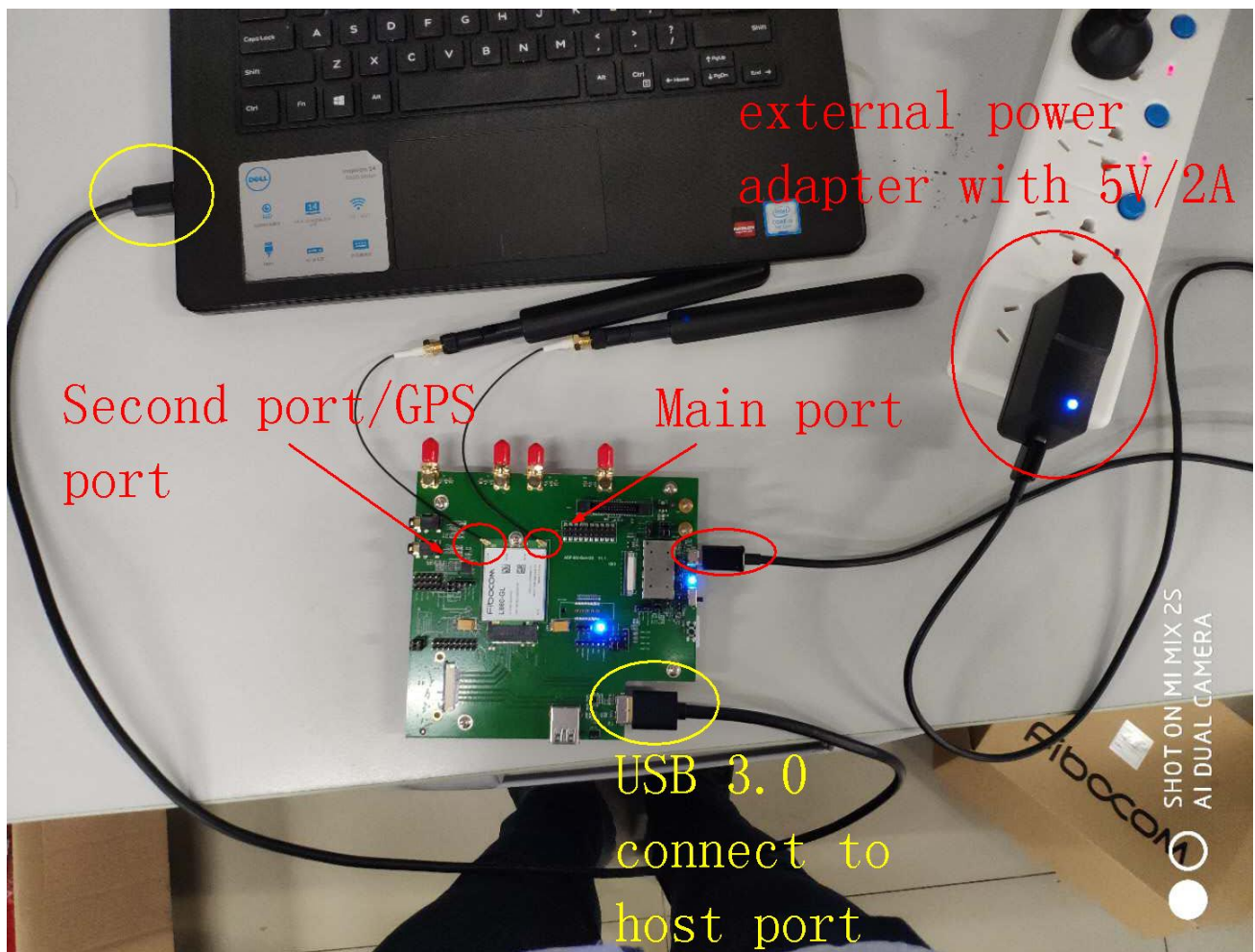


FIG 2.3

2.1.2PILLARS Charge MODE (for Limiting-Voltage testing Only)

The connection type and jumper mode as following FIG:

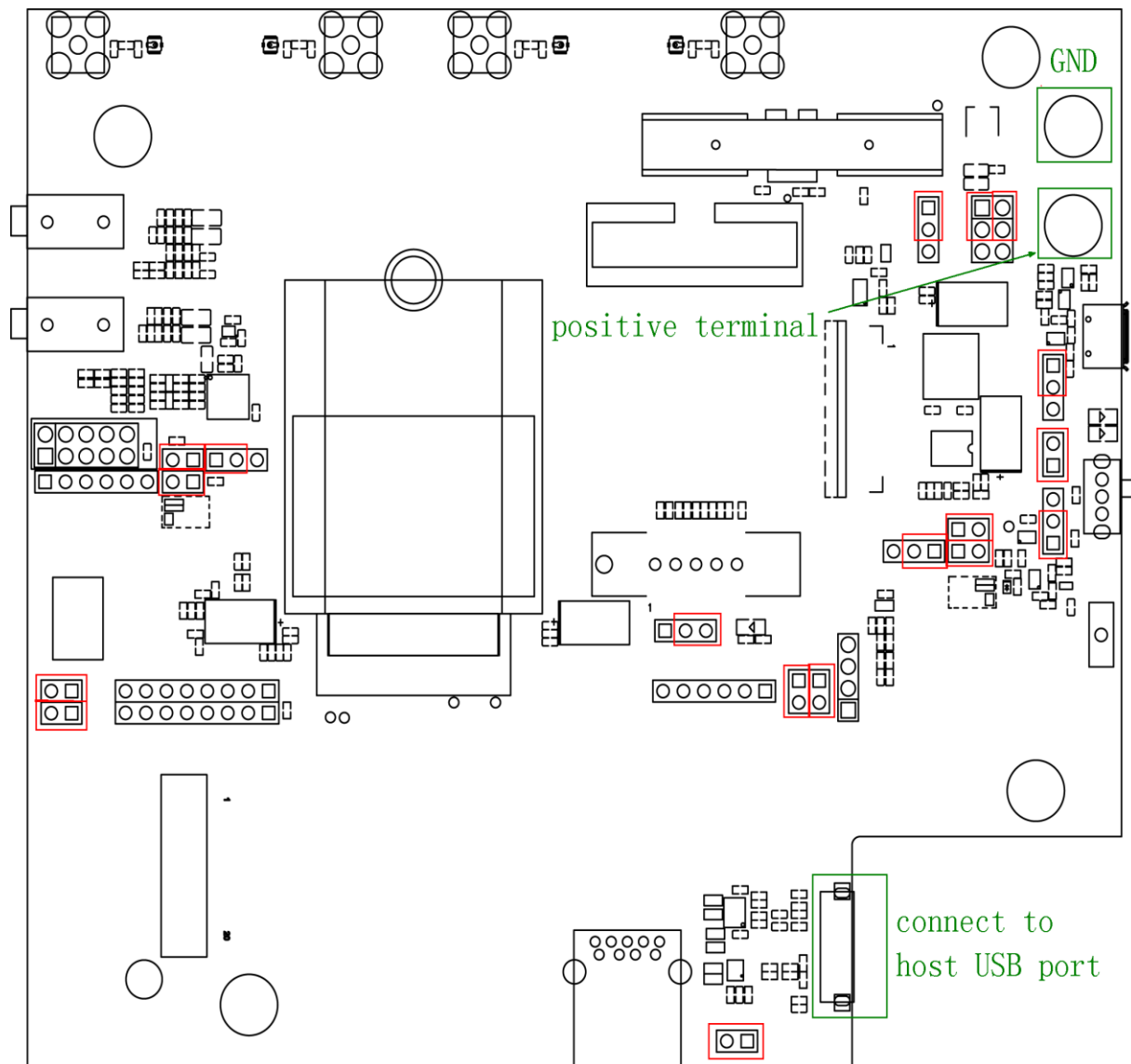


FIG 2.4

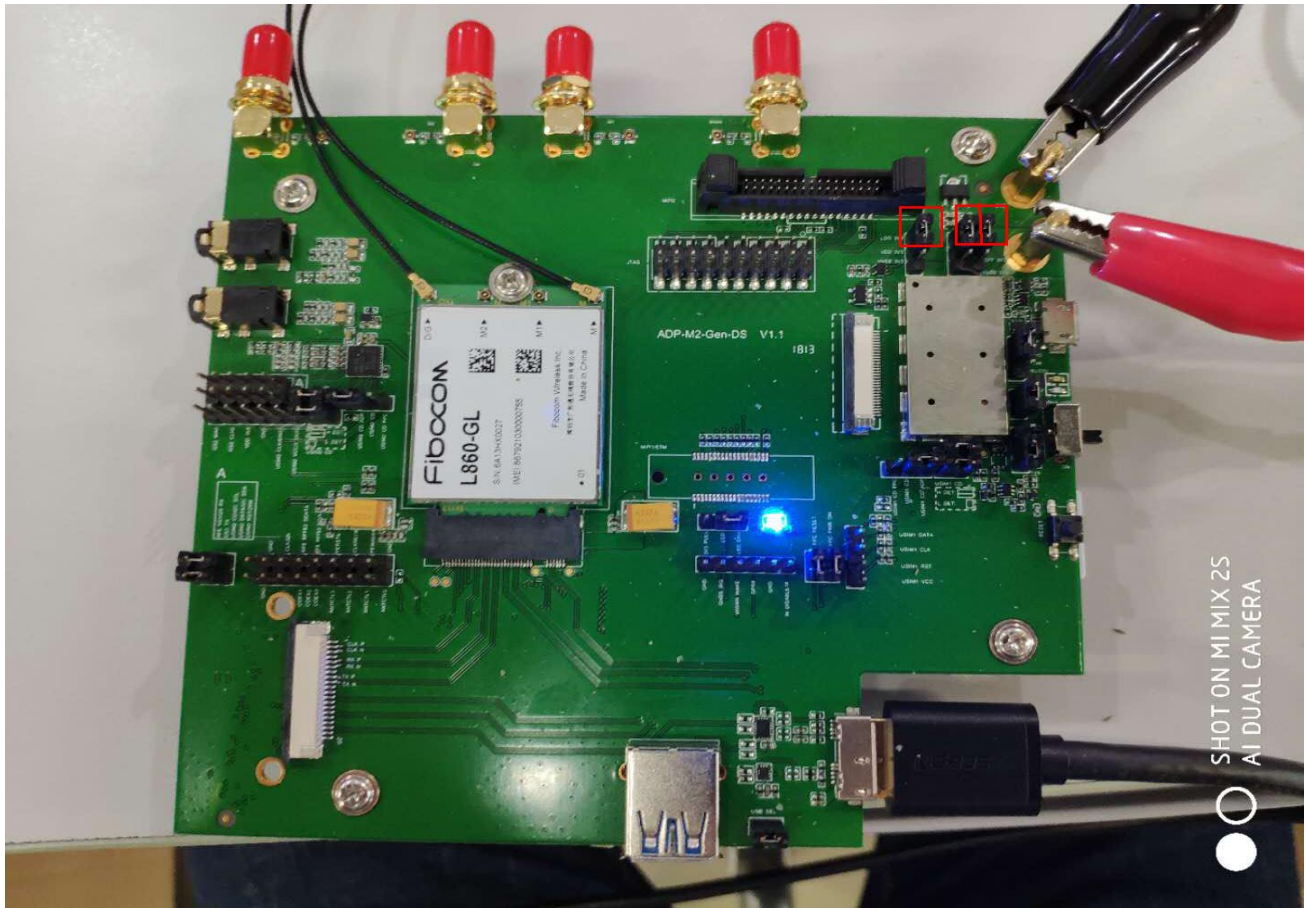


FIG 2.5

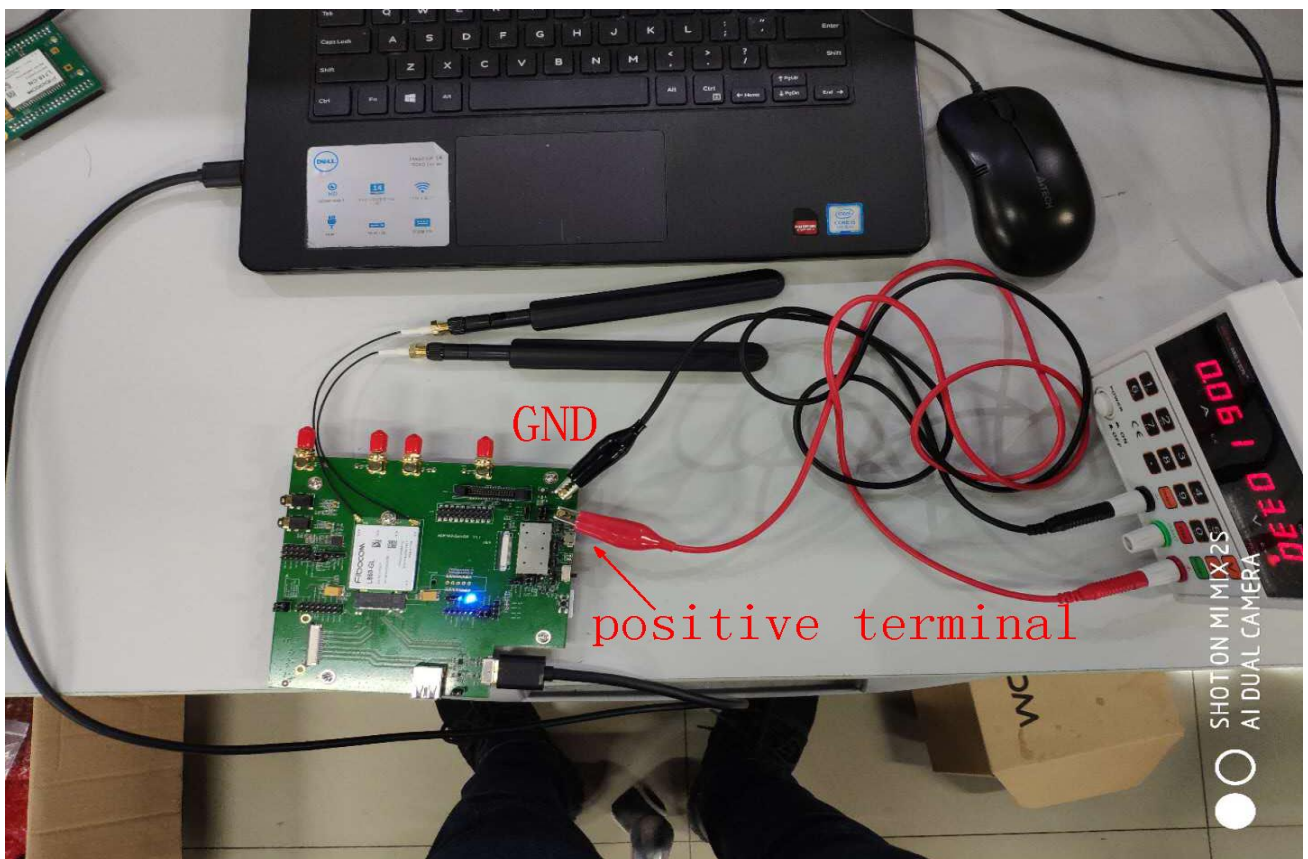
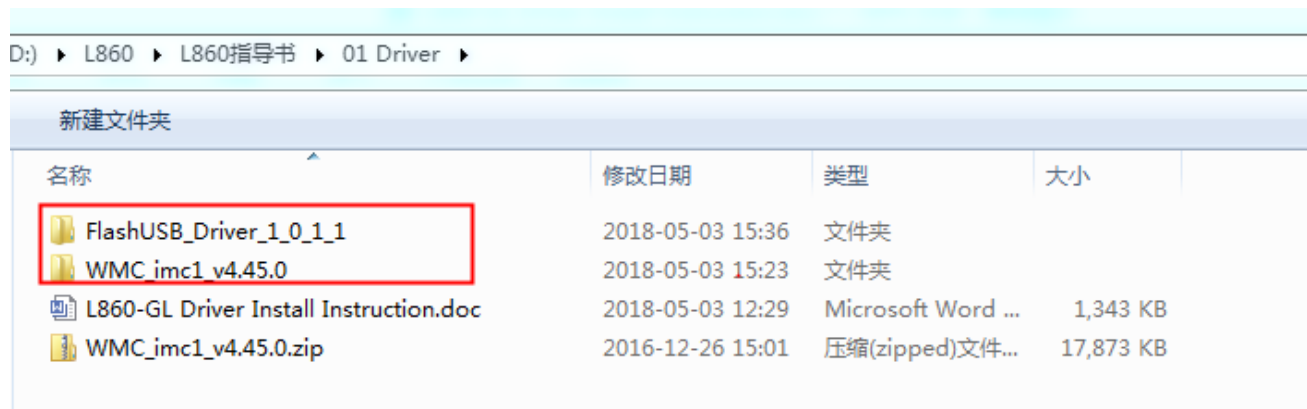


FIG 2.6

3 Driver Installation

3.1 Driver File

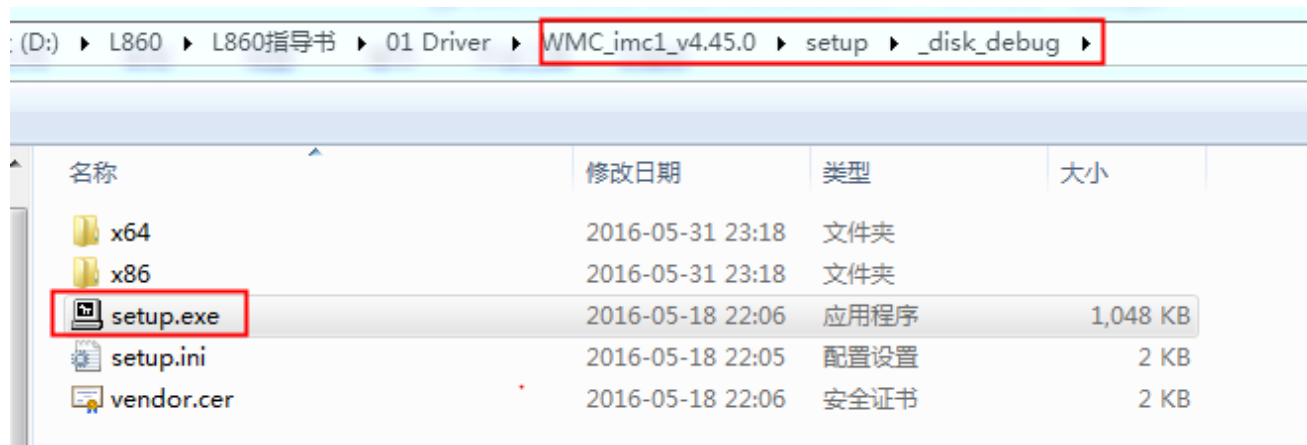
Driver file: We need to install Flash USB Driver and WMC Driver



名称	修改日期	类型	大小
FlashUSB_Driver_1_0_1_1	2018-05-03 15:36	文件夹	
WMC_imc1_v4.45.0	2018-05-03 15:23	文件夹	
L860-GL Driver Install Instruction.doc	2018-05-03 12:29	Microsoft Word ...	1,343 KB
WMC_imc1_v4.45.0.zip	2016-12-26 15:01	压缩(zipped)文件...	17,873 KB

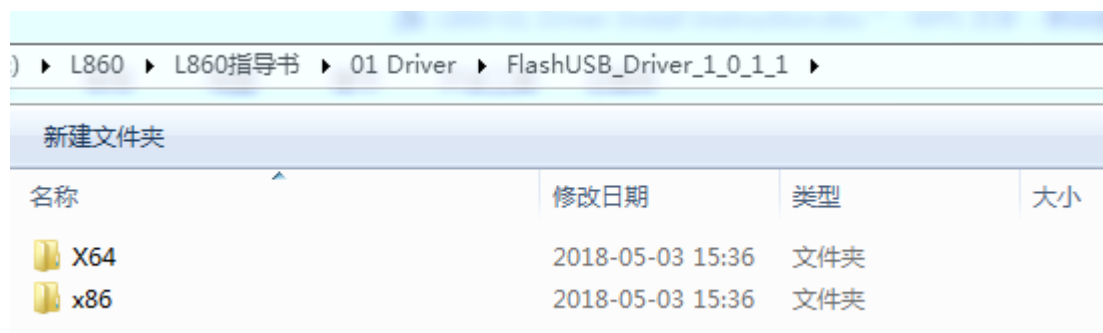
3.2 Driver Install

WMC Driver File path: WMC_imc1_v4.45.0\setup_disk_debug. Run the setup.exe file to install WMC Driver

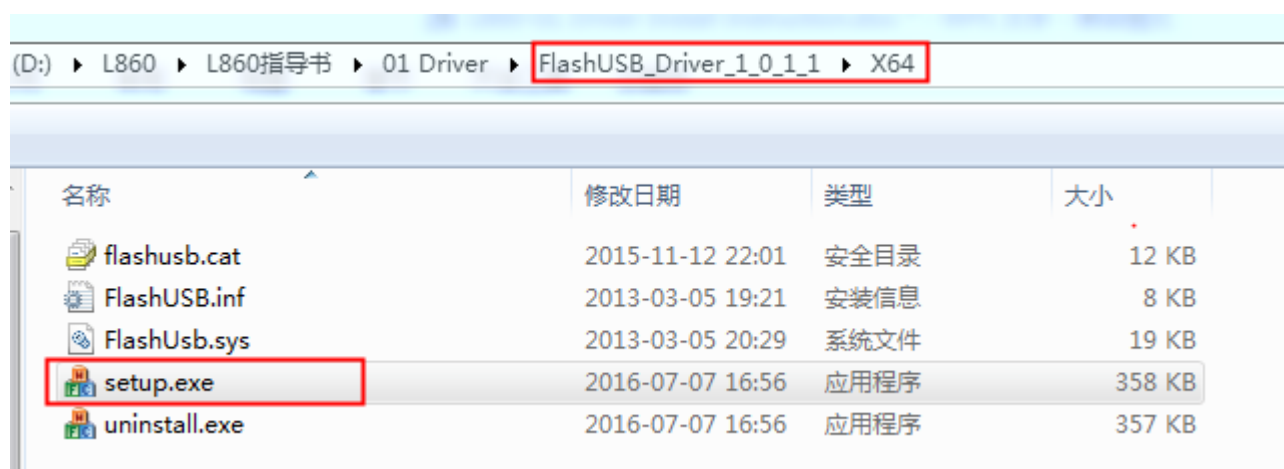


名称	修改日期	类型	大小
x64	2016-05-31 23:18	文件夹	
x86	2016-05-31 23:18	文件夹	
setup.exe	2016-05-18 22:06	应用程序	1,048 KB
setup.ini	2016-05-18 22:05	配置设置	2 KB
vendor.cer	2016-05-18 22:06	安全证书	2 KB

The Flash USB driver needs to be selected based on the operating system. The 64-bit operating system selects the driver file under the X64 path, the 32-bit operating system selects the driver file under the X86 path. Then run the setup.exe file to install Flash USB Driver.



The Flash USB Driver is used to upgrade software. You will not be able to upgrade your software without installing the flash USB driver



When the driver installation is complete, you can see it in the control panel

卸载或更改程序

若要卸载程序，请从列表中将某选中，然后单击“卸载”、“更改”或“修复”。

组织 - 卸载				
名称	发布者	安装时间	大小	版本
Intel(R) Platform Flash Tool Modem version 6.0.1.0	Intel Corporation	2018-05-03	47.7 MB	6.0.1.0
Intel Mobile Family IMC1 v4.45.0	Intel Mobile Communications GmbH	2018-04-12		4.45.0

3.3 Modem Port Introduction

If the driver is installed, when the module is powered on, you can see two ACM ports, one modem port and three NCM ports. ACM1 is STT trace port and ACM2 is AT command port.

